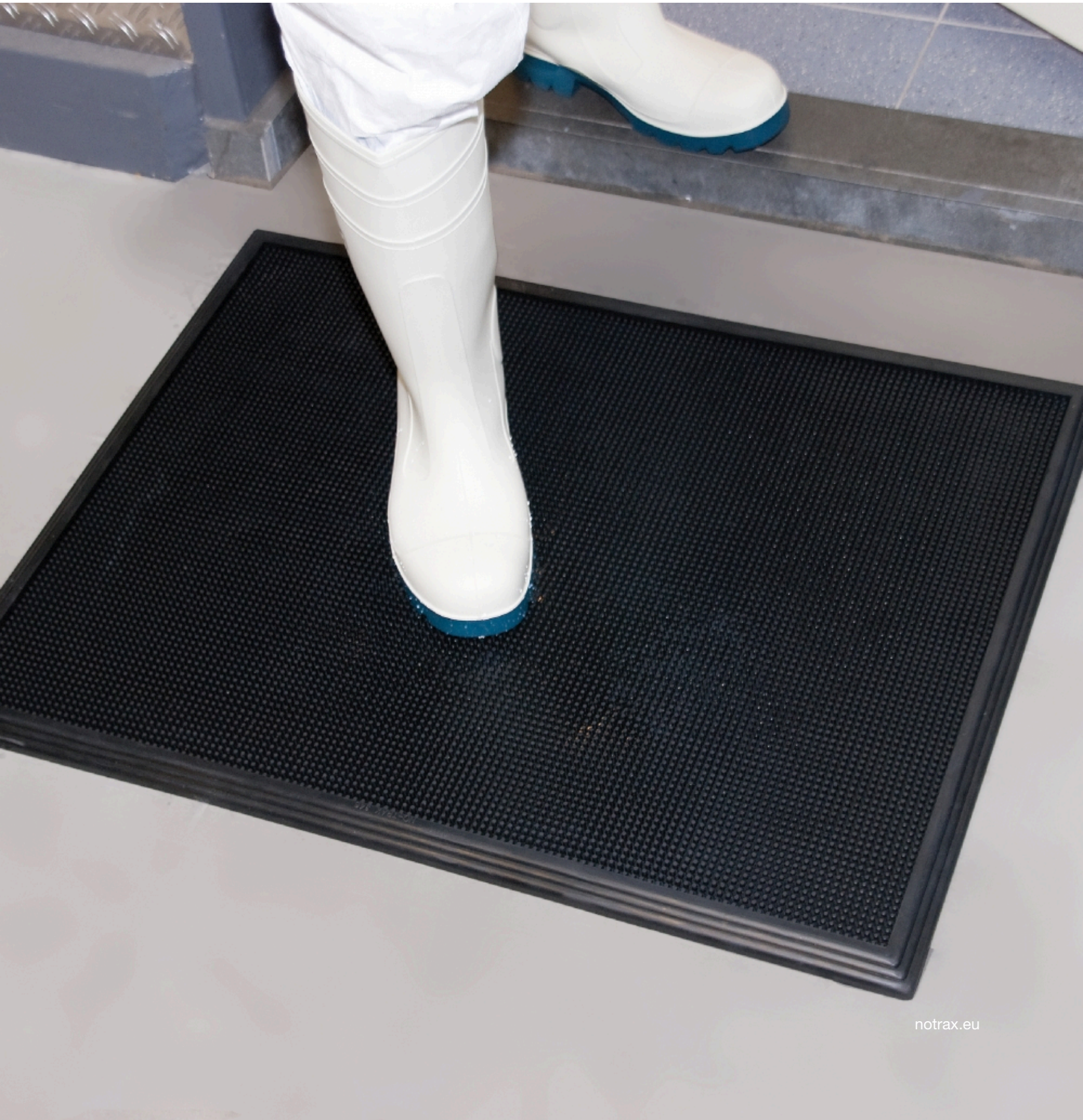


# 346 Sani-Trax<sup>®</sup>

Disinfecting foot bath entrance mat



# Ergonomic, Anti-fatigue & Safety Matting - Hygiene Matting 346 Sani-Trax®

This mat cleans and sanitizes shoes, recommended at entrances to all food processing areas. As traffic passes, rubber tips bend to immerse soles in disinfectant solution, a double action that keeps contamination from reaching food processing areas.

- Convenient mat size fits most doorways
- Suction cups on underside prevents mat from shifting
- 100% tough natural rubber compound; designed to resist to most chemicals and variations in temperature

## Recommended use

- Wet/Dry Areas
- At doorways, starter rooms, packaging areas, laboratories, employee locker rooms, break rooms, refuse areas and receiving areas. Any place where spread of contamination needs to be limited.
- Heavy traffic

## Colors:

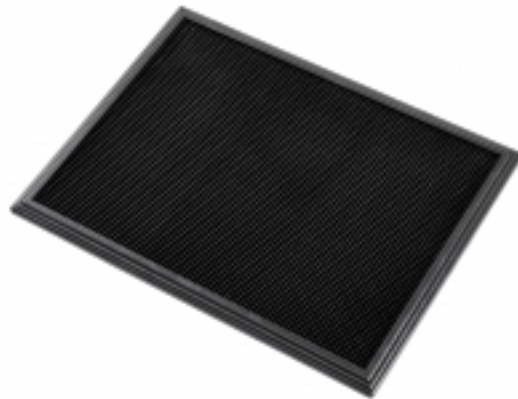
- Black

## Sizes:

- 45cm x 60cm
- 61cm x 81cm

## Accessories:

- 173-19 Deco Design™ Disinfection & Dry Zone Mat
- 354 Electrolysed Water Disinfectant



# Ergonomic, Anti-fatigue & Safety Matting - Hygiene Matting

## Sani-Trax®

### General

Brand	Notrax®
Category	Hygiene Matting
Product Number	346
Product Family	Industrial & Commercial Matting
Product Group	Ergonomic, Anti-fatigue & Safety Matting
Product Name	Sani-Trax®
Recommended use	At doorways, starter rooms, packaging areas, laboratories, employee locker rooms, break rooms, refuse areas and receiving areas. Any place where spread of contamination needs to be limited.
Shipping Location	Barendrecht 2992SB, The Netherlands, Chicago, IL 60638
Type	Disinfecting Foot Bath
Usage Intensity	Heavy traffic

### Sustainability

Reach	Reach compliant (Registration, Evaluation, Authorization and Restriction of Chemicals).
Sustainability	Recyclable material
Warranty	5

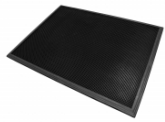
### Tests

Fire rating US	Pass
----------------	------

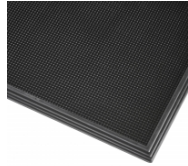
### Technical Specifications

Application	Industrial Environments
Edges	Bevelled rubber borders on all four sides
Material	Natural rubber
Material Group	Natural rubber
Process	Compression Moulding

# Sani-Trax® Black



346S2432BL



346S1824BL

Art. nr.	Dimension (cm)	Weight (kg)	Thickness (mm)
346S2432BL	61cm x 81cm	6.2	19
346S1824BL	45cm x 60cm	3.5	19

## Accessories

173-19 Deco Design™ Disinfection & Dry Zone Mat

354 Electrolysed Water Disinfectant

